

MDM (Mobile Device Management Software)

Professional, Efficient, Flexible, Secure

All-in-One Device Management Solution

MDM solution offers remote management services for handhelds, tablets, and other smart devices. Key features include centralized device control, OTA upgrades, geofencing, app management, and file management, empowering industries to establish enterprise-grade security platforms, significantly enhancing device management efficiency and productivity.



Key Features

Device Management

- ✦ Easy registration and activation.
- ✦ Comprehensive lifecycle management for devices.
- ✦ One-click access to device logs for real-time troubleshooting.

File Management

- ✦ Share files to devices with real-time push notifications.
- ✦ Support for various document formats.

Location and Geofencing

- ✦ Real-time tracking of device location.
- ✦ Remote monitoring of device status and usage
- ✦ Set geofencing boundaries to restrict device usage areas.

App Management

- ✦ Distribute applications to devices, uninstall applications, or clear application data.
- ✦ Configure applications to auto-start with device boot.
- ✦ Create application whitelists and blacklists to control installations and uninstalls.

Device Control

- ✦ Remotely execute shutdowns, reboots, factory resets, and lock screens.
- ✦ Manage permissions for MDM, mobile networks, keys, status bars, and boot startup.
- ✦ Deploy policies for APN, Ethernet, proxy configuration, and certificate installation.

OTA Upgrades

- ✦ Provide detection and upgrade services for device firmware and applications.
- ✦ One-click upload for flexible deployment.
- ✦ Differential technology for system upgrades reduces file size and resource consumption.

Software Features

Efficiency

- Comprehensive management across devices, applications, and content.
- Supports group management.
- User-friendly, visual interface.

Security

- Implement multi-layered security policies via MDM.
- Locate device geolocation.
- Remotely wipe application data from devices.

Professionalism

- Global deployment support.
- Multi-tier departmental and user permission configurations.
- 24/7 onsite or remote support available.

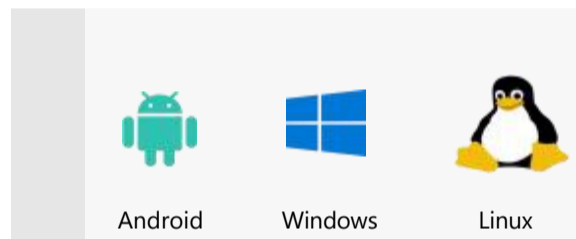
Flexibility

- Free trial available.
- Brand and personalized customization options.
- Deploy on private cloud, public cloud, or local environments.

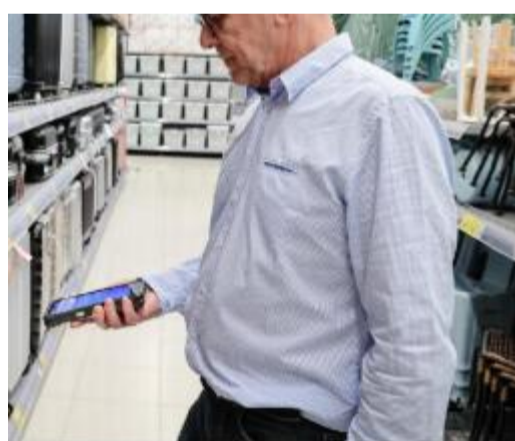
Supported Devices



Supported Operating Systems



Supported Browsers



Retail



Warehousing and Logistics



Manufacturing



Public Utilities